

Amplon RT Pro Series UPS

Single-phase, 1-3 kVA, 230 Vac

Powering Success, Sustaining Growth

Introducing Delta RT Pro UPS, a top-tier high-performance online double-conversion solution featuring industry-leading AC-AC efficiency, unity power factor, and superior flexibility, all in a compact 2U size. Engineered to safeguard your critical applications from diverse power challenges, RT Pro ensures a resilient power foundation, paving the way for continuous business success and growth!



Power More from Less

- Unity power factor (kVA=kW), provides maximum power for your facility
- Industry leading AC-AC efficiency up to 94.3% and ECO mode efficiency up to 99% offer significant energy cost savings
- Extends battery lifespan through reduced usage with wide 120-280V input range and a smart 3-stage battery charge mechanism

Superior Flexibility

- Two programmable outlets group for power-cycling and optimize battery runtime for most critical applications
- Easily scales for longer backup time with optional external battery pack
- REPO/ROO enables remote shutdown and restart during accidents to ensure safety
- Integrated dry-contacts with user-selectable definition
- Convertible rack and tower configuration with rotatable LCD screen

Easy Management

- CE and UL certified, streamlines global models and service management for multinational operations
- LCD display and intuitive interface offer effortless monitoring and configuration
- Intelligent management software connectivity via RS-232, USB, or mini slot port for remote monitoring and setting



IT



Telecom



Industrial



Transportation



Financial



Government



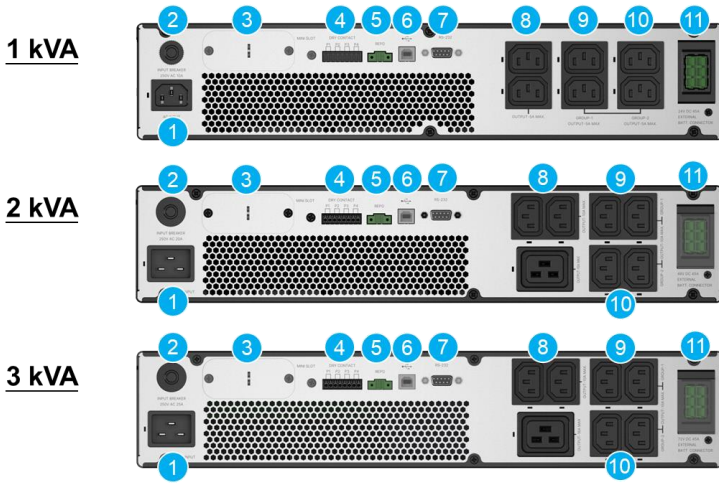
SME



Retail

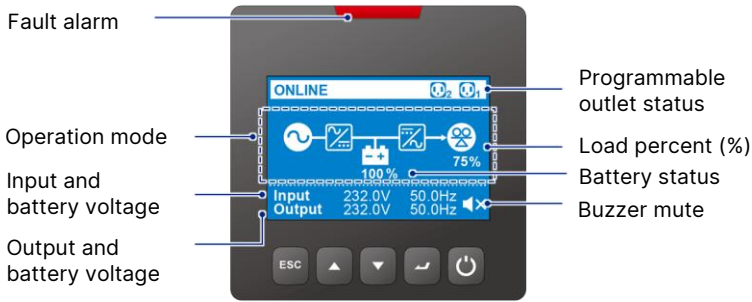


Rear Panel

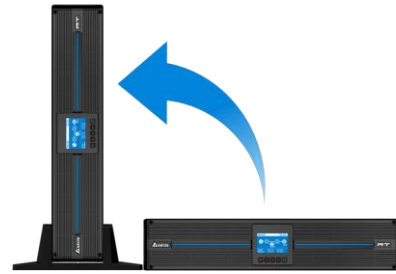


- 1 Input socket
- 2 Input circuit breaker
- 3 Mini slot
- 4 Dry contact (input x1, output x3)
- 5 REPO/ ROO
- 6 USB port
- 7 RS-232 port
- 8 Non-programmable outlet
- 9 Programmable outlet (load segment group 1)
- 10 Programmable outlet (load segment group 2)
- 11 External battery connector

LCD



Form Factor



Versatile rack/tower form factor with rotatable LCD screen

Runtime Table

1 kVA

	100 W	200 W	300 W	400 W	500 W	600 W	700 W	800 W	900 W	1000 W
Internal Battery	70.3	31.9	18.4	11.9	8.2	6	4.6	3.6	2.9	2.4
UPS+1EBC	241.7	123	79.5	57	43.4	34.3	27.9	23.1	19.5	16.6
UPS+2EBC	414	215.7	142.6	104.7	81.6	66	54.9	46.5	40	34.8

2 kVA

	200 W	400 W	600 W	800 W	1000 W	1200 W	1400 W	1600 W	1800 W	2000 W
Internal Battery	73.6	33.6	19.5	12.6	8.8	6.4	4.9	3.8	3.1	2.5
UPS+1EBC	252.5	128.9	83.4	60	45.7	36.2	29.5	24.5	20.6	17.6
UPS+2EBC	432.3	225.8	149.5	109.9	85.7	69.4	57.7	49	42.2	36.8

3 kVA

	300 W	600 W	900 W	1200 W	1500 W	1800 W	2100 W	2400 W	2700 W	3000 W
Internal Battery	77	35.3	20.6	13.4	9.35	6.8	5.2	4.1	3.3	2.7
UPS+1EBC	263.6	134.9	87.5	63	48	38	31	25.8	21.8	18.6
UPS+2EBC	451	236.1	156.5	115.2	89.9	72.9	60.7	51.5	44.4	38.7

Unit: min

Technical Specifications

Model	RT Pro-1K	RT Pro-2K	RT Pro-3K
Topology	Online double-conversion		
Power Rating	1 kVA 1 kW	2 kVA 2 kW	3 kVA 3 kW
INPUT			
Nominal Voltage	200/208/220/230/240 Vac, 1P2W+PE		
Voltage Range	175-280 Vac (100% load); 120-175 Vac (with derating to 70-100% load) ⁽¹⁾		
Frequency	40-70 Hz		
Power Factor	0.99 (100% load)		
Connection	IEC C14	IEC C20	
OUTPUT			
Nominal Voltage	200 ⁽²⁾ /208 ⁽²⁾ /220/230/240 Vac, 1P2W+PE		
Voltage Regulation	±3% (linear load)		
Frequency	50/60 ± 0.05 Hz		
Total Harmonic Distortion (THDv)	≤ 2% (linear load)		
Power Factor	1		
Connection	IEC C13 ×2, Programmable IEC C13 ×2 ×2 groups	IEC C13 x2, IEC C19 x1, Programmable IEC C13 x2 x2 groups	
Overload Capability	< 105% continuous; 105-125%: 1 min ± 5 secs; 126-150%: 15 ± 3 secs; 151-155%: 0.1 secs		
Current Crest Ratio	3:1		
EFFICIENCY			
Online Mode	93.5%	94%	94.3%
ECO Mode	99%		
BATTERY			
Battery Type	VRLA		
Nominal Voltage	24 Vdc	48 Vdc	72 Vdc
Quantity	2 pcs	4 pcs	6 pcs
Runtime	100% load 2.4 mins	2.5 mins	2.7 mins
	70% load 4.6 mins	4.9 mins	5.2 mins
Charge Current	Up to 2.5 A		
COMMUNICATION INTERFACE			
Display	LCD display with LED indicators		
Port	USB, RS-232, REPO, Mini Slot, Input dry contact x1, Output dry contact x3		
REPO (Emergency Power Off)	Standard		
PHYSICAL			
Dimensions (W x D x H)	440 x 335 x 88 mm	440 x 430 x 88 mm	440 x 565 x 88 mm
Net Weight	11.7 kg	21 kg	28 kg
Packing Dimensions (W x D x H)	484 x 579 x 220 mm	594 x 508 x 220 mm	605 x 1005 x 220 mm
Packing Weight	18 kg	28.8 kg	38 kg
ENVIRONMENT			
Operating Temperature	0 to 55°C ⁽³⁾		
Humidity	5-95% (non-condensing)		
Audible Noise ⁽⁴⁾	< 40 dBA		
Altitude	0-3,000 m (derating 1%/100 m from 1,000-3,000 m)		
Ingress Protection	IP20		
CONFORMANCE			
Safety	CE, UL, cUL, RCM, UKCA		
EMC	IEC 62040-2		
Sustainability	RoHS, REACH		

(1) 200/208 Vac: 160-280 Vac (100% load); 120-160 Vac (with derating to 70-100% load)

(2) Derating to 90% load

(3) 40 to 50°C de-rating to 90% load; 50 to 55°C de-rating to 75% load

(4) ECO mode at front side 1 meter

All specifications are subject to change without prior notice.

Management Solution

UPSentry

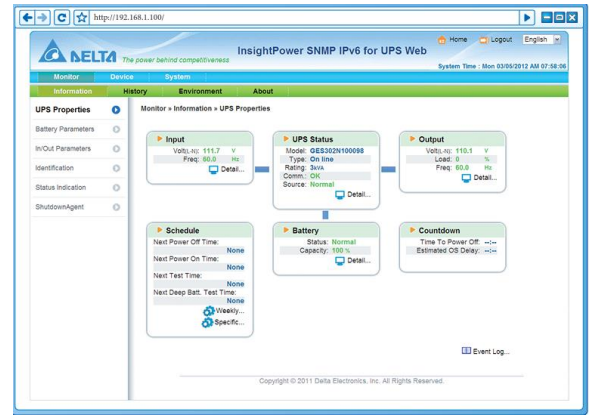
- Supports RS-232 & USB communication
- Schedules shutdown, restart and battery test
- Event tracking

ShutdownAgent

- Provides a graceful unattended shutdown of multiple loads in a network

SNMP IPv6 (optional)

- Remote UPS management from any workstation through internet or intranet
- UPS and system function configuration from any client (password protected)
- Event logs and data tracking



What's in the Box

Standard Accessories

RT Pro UPS	User manual
USB cable	AC input cable
Output cable	Rail kit, ear kit and tower stand
UPSentry software	ShutdownAgent software



More Product Information

Optional Accessories

External Battery Cabinet	Net Dimensions (W x D x H)	Net Weight	Packing Dimensions (W x D x H)	Packing Weight
RT-1K External Battery Cabinet (Part number: BBU022B2009035)	440 x 335 x 88 mm	15.2 kg	586 x 483 x 220 mm	20.2 kg
RT-2K External Battery Cabinet (Part number: BBU042B5009035)	440 x 430 x 88 mm	28.5 kg	593 x 507 x 230 mm	33.5 kg
RT-3K External Battery Cabinet (Part number: BBU062B6009035)	440 x 610 x 88 mm	41.1 kg	620 x 730 x 252 mm	58.3 kg

UPS Management Accessories

Mini SNMP IPv6 (Part number: SCMS100035)	Manages UPS and system functions securely and adjusts parameters through SNMP management stations or internet browsers using HTTP forms.
Mini Relay I/O Card (Part number: 3915101864-S)	Offers 6 relay output contacts to monitor status and 2 input contacts for simple shutdown and battery testing in UPS management.
Mini Modbus Card (Part number: 3915101865-S)	Supports Modbus communication with a PC via RS-485 and RS-232 interfaces, allowing for flexible and simultaneous use.

Installation

Dust Filter	Prevents dust from entering into the UPS
Input Cable	Connects to the mains. Applicable for North America market with NEMA plug

