

Delta UPS Amplon Family

INX Series, Single Phase, 1/2/3 kVA

Standard Runtime Models & Extended Runtime Models (6 A)

Reliable Power for Business Excellence

Discover the remarkable INX, a premier online double-conversion UPS series manufactured in India and design exclusively for India customer's need. Unleash your business with this CE certified UPS. Ensure superior performance and quality that surpass expectations!



High Reliability

- True online double-conversion topology and zero transfer time to battery ensure high reliability
- Wide input voltage and frequency range allows the UPS to provide stable power supply even in harsh electrical environment.
- Cold-start capability allows battery to start up the UPS when a blackout happens
- Protection against over voltage protects UPS and loads from dangerous mains peak-voltages

Ultra Durable

- Wider operating temperature up to 50 °C
- Excellent overload capacity secures continuous output to loads within the timeframe while loads excess nominal rating
- Long-lasting battery life design provides battery with deep discharge protection and minimizes transfer to battery with wide input voltage range

User Friendly

- Achieve up to 97 % efficiency in active ECO mode, conserving energy and minimizing heat generation
- The intuitive LCD display with LED indicators provide detailed and accurate information about UPS status with the ability to configure locally
- Support multiple communication interfaces, including USB port, RS232 port and Mini slot (option for mini SNMP)



IT



Telecom



Industrial



Transportation



Medical



Financial



Government



SME



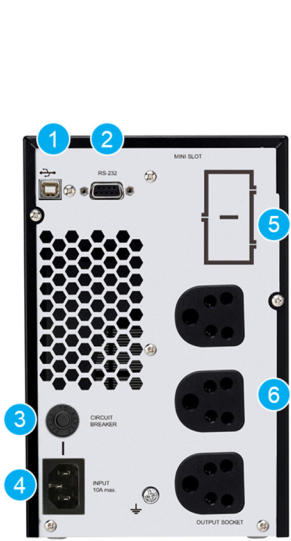
Retail



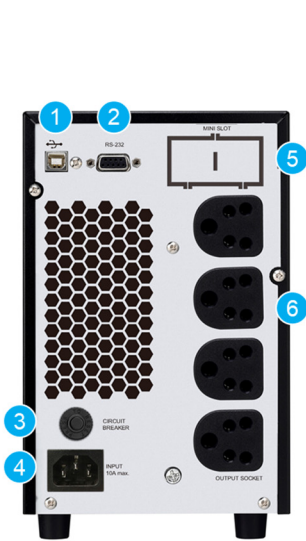
Rear Panel

Standard Runtime Model

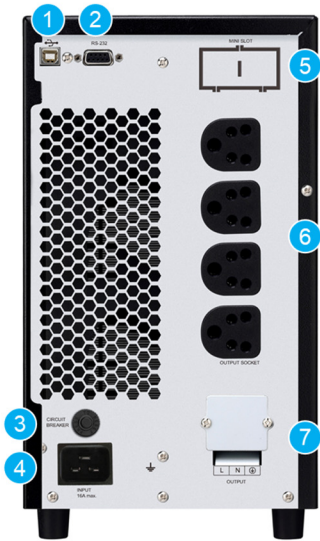
1 kVA



2 kVA

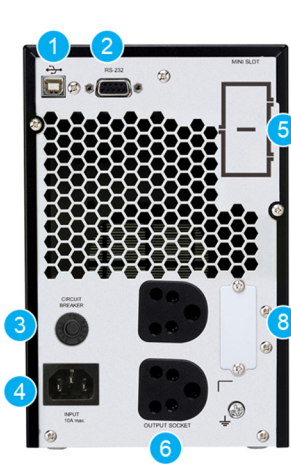


3 kVA

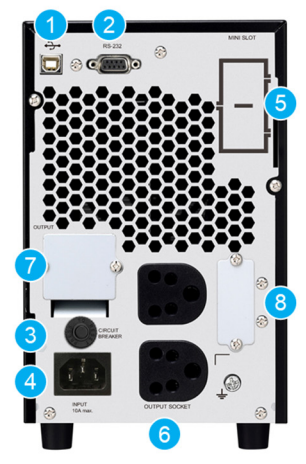


Extended Runtime Model

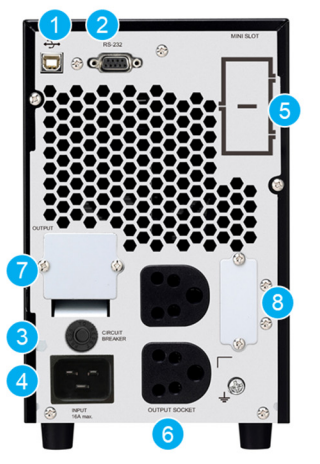
1 kVA



2 kVA



3 kVA



- 1 USB port
- 2 RS-232 port
- 3 Input circuit breaker
- 4 AC input
- 5 Mini slot
- 6 Output socket
- 7 Output terminal
- 8 External battery connector

Runtime Table

Standard Runtime Model

| | | | | |
|-------------|------|-------|-------|-------|
| 1 kVA | | | | |
| Load | 225W | 450W | 675W | 900W |
| Backup Time | 22.6 | 9.6 | 5.4 | 3.2 |
| 2 kVA | | | | |
| Load | 450W | 900W | 1350W | 1800W |
| Backup Time | 22.4 | 9.8 | 5.5 | 3.0 |
| 3 kVA | | | | |
| Load | 675W | 1350W | 2025W | 2700W |
| Backup Time | 21.7 | 9.9 | 5.6 | 3.5 |

Unit: min

Technical Specifications

| Model | | INX-1K | INX-2K | INX-3K |
|----------------------------------|------------------------------|---|-------------------------------------|-------------------------------------|
| Topology | | Online double-conversion | | |
| Power Rating | Standard Runtime Model | 1 kVA/ 0.9 kW | 2 kVA/ 1.8 kW | 3 kVA/ 2.7 kW |
| | Extended Runtime Model (6 A) | 1 kVA/ 0.8 kW | 2 kVA/ 1.6 kW | 3 kVA/ 2.4 kW |
| INPUT | | | | |
| Nominal Voltage | | 230 Vac, 1 phase 2 Wire (1PH+PE) | | |
| Voltage Range | Standard Runtime Model | 180~285 Vac (full load); 120~180 Vac (with derating to 60~100 %) | | |
| | Extended Runtime Model (6 A) | 160~285 Vac (full load); 110~160 Vac (with derating to 60~100 %) | | |
| Frequency | | 40~70 ± 0.5 Hz | | |
| Power Factor | | > 0.99 (full load) | | |
| Plug Type | | Plug 16 A India | | |
| OUTPUT | | | | |
| Nominal Voltage | | 200, 208 ⁽¹⁾ , 220, 230, 240 Vac | | |
| Voltage Regulation | | ±1 % | | |
| Frequency | | 50/60 ± 3 Hz | | |
| Total Harmonic Distortion (THDv) | | ≤ 3 % (linear load) | | |
| Power Factor | | 0.9 (Standard runtime model); 0.8 (Extended runtime model) | | |
| Overload Capability | | < 105 %: Continuous; 105~110 %: 10 minutes; 110~130 %: 1 minute; > 130 %: 3 seconds | | |
| Current Crest Ratio | | 3:1 | | |
| RECEPTACLE | | | | |
| Standard Runtime Model | | India socket x3 | India socket x4 | India socket x4 + Terminal block x1 |
| Extended Runtime Model (6 A) | | India socket x2 | India socket x2 + Terminal block x1 | |
| EFFICIENCY | | | | |
| Online Mode | | 88 % | 89 % | 90 % |
| ECO Mode | | 93 % | 94 % | 95 % |
| BATTERY | | | | |
| Battery Type | | VRLA | | |
| Nominal Voltage | Standard Runtime Model | 24 Vdc | 48 Vdc | 72 Vdc |
| | Extended Runtime Model (6 A) | 36 Vdc | 72 Vdc | |
| Runtime | 75% load | 5.4 mins | 5.5 mins | 5.6 mins |
| Charge Current | Standard Runtime Model | 1 A | | |
| | Extended Runtime Model (6 A) | 1, 2, 4, 6 A | | |
| COMMUNICATION INTERFACE | | | | |
| Display | | LCD screen with LED indicators | | |
| Port | | USB, RS-232, Mini slot (option for mini SNMP, mini Modbus and mini relay I/O card) | | |
| Audible Alarm | | Battery mode, Low battery, Overload, Fault, Bypass mode | | |
| PHYSICAL | | | | |
| Dimensions (W x D x H) | | | | |
| | Standard Runtime Model | 145 x 282 x 220 mm | 145 x 504 x 220 mm | 190 x 421 x 318 mm |
| | Extended Runtime Model (6 A) | 145 x 282 x 220 mm | 145 x 397 x 220 mm | |
| Net Weight | Standard Runtime Model | 9.2 kg | 16.8 kg | 27 kg |
| | Extended Runtime Model (6 A) | 4.1 kg | 6.4 kg | 7.4 kg |
| Packing Dimensions (W x D x H) | | | | |
| | Standard Runtime Model | 230 x 360 x 325 mm | 230 x 590 x 355 mm | 320 x 560 x 460 mm |
| | Extended Runtime Model (6 A) | 230 x 360 x 325 mm | 230 x 472 x 325 mm | |
| Packing Weight | Standard Runtime Model | 10.7 kg | 19.0 kg | 30.1 kg |
| | Extended Runtime Model (6 A) | 5.6 kg | 8.3 kg | 9.3 kg |
| ENVIRONMENT | | | | |
| Operating Temperature | | | | |
| | Standard Runtime Model | 0 to 50 °C (40 to 50 °C de-rating to 70 % load) | | |
| | Extended Runtime Model (6 A) | 0 to 50 °C (40 to 50 °C de-rating to 80 % load) | | |
| Humidity | | 20~90 % (non-condensing) | | |
| Audible Noise ⁽²⁾ | | < 45 dBA | | |
| Altitude | | 0-4,000 m (derating 1 %/100 m from 1,000-4,000 m) | | |
| Storage Temperature | | -20 to +50 °C | | |
| Ingress Protection | | IP20 | | |
| CONFORMANCE | | | | |
| Safety | | BIS, CE | | |
| EMC | | IEC 62040-2 | | |

(1) Standard runtime model: 30 % de-rating at 208 V. Extended runtime model: 20 % de-rating at 200 V / 208 V

(2) Audible noise test with UPS < 75 % load at 25 °C in online mode

All specifications are subject to change without prior notice.

Management Solution

UPSentry

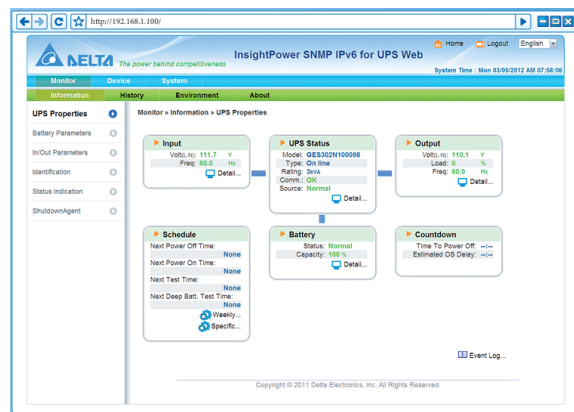
- Supports RS-232 & USB communication
- Schedules shutdown, restart and battery test
- Event tracking

ShutdownAgent

- Provides a graceful unattended shutdown of multiple computer systems over a network

SNMP IPv6 (optional)

- Remote UPS management from any workstation through internet or intranet
- UPS and system function configuration from any client (password protected)
- Event logs and data tracking



What's in the Box

Standard Accessories

INX UPS

User manual

USB cable (1.5 m)

AC input cable (1.5 m)

Battery cable with screws and nuts
(for Extended Runtime Model only)

ShutdownAgent

UPSentry software



More Product Information

Optional Accessories

UPS Management Accessories

| | |
|--|--|
| Mini SNMP IPv6 (Part number: SCMS100035) | Manages UPS and system functions securely and adjusts parameters through SNMP management stations or internet browsers using HTTP forms. |
| Mini Relay I/O card (Part number: 3915101864-S) | Offers 6 relay output contacts to monitor status and 2 input contacts for simple shutdown and battery testing in UPS management. |
| Mini Modbus Card (Part number: 3915101865-S) | Supports Modbus communication with a PC via RS-485 and RS-232 interfaces, allowing for flexible and simultaneous use. |



Delta Group



Delta Power Solutions



Delta ICT LinkedIn



Delta ICT YouTube

