

# Delta InfraSuite rRPP

## Rack-Mount Remote Power Panel

### Flexible and reliable power distribution solution ideal for small data centers

Delta's Rack-Mount Remote Power Panel (rRPP) is an ideal power distribution solution for up to 40 kVA. It integrates perfectly with standard server racks and supports either 3 phase or 1 phase output power.

Ensuring maximum reliability and uptime, rRPP supports compartmentalized control and provides real time power quality monitoring and fast response to related events with full-featured management via a web browser.

rRPP allows installation of a maximum of four breaker modules. The breaker modules support tool-less replacement and minimize downtime caused by add-ons and changes to accommodate onsite power distribution needs.



### High Flexibility

- Provides 1 phase and 3 phase breaker modules with 16A and 32A rating options
- Highly scalable design allows tool-less installation of a maximum four breaker modules (optional), and supports a maximum 12 branches
- Standard rRPP chassis fits all 1P/3P 16A/32A breaker modules, and easily adapts to power feed requirement changes

### High Reliability

- Intelligently monitors system /each branch's status for power usage and viability
- Compartmentalized control with separate breaker module and phases
- Offers abnormal voltage and current alarms
- Provides statistics for system max/min voltage, current, frequency and kW with four hours tracking history
- Proactive management from assets with up to 2000 event logs and data trending

### Convenience

- Configurable alarm notification for over/under current and poor power factor
- Each breaker module has LED light for easily identifiable power status
- Freely connects to computer with built-in RS-485 or USB port to monitor branch status and parameter configuration
- Mini SNMP card (optional) allows remote system/branch monitoring. Provides quick summary with glance view, and detail system/branch power status data are readily available



# Delta InfraSuite rRPP

## Rack-Mount Remote Power Panel

### Technical Specifications

Model		Rack-Mount RPP
Capacity	Full Load Rating	40 kVA / 40 kW
	Max. Current	60 A
Input	Nominal Voltage	220/380 V, 230/400 V, 240/415 V (3-phase, 4-wire + G) 220 V, 230 V, 240 V (1-phase, 2-wire+G)
	Voltage Range	220/380 V ± 15%
	Frequency Range	50/60 Hz ± 5%
Output	Nominal Voltage	220/380 V, 230/400 V, 240/415 V (3-phase, 4-wire + G) 220 V, 230 V, 240 V (1-phase, 2-wire+G)
	Breaker Module (optional)	Max. 4 x 16A breaker modules (1-pole or 3-pole), supports 12-pole at most Max. 2 x 30A/32A breaker modules (1-pole or 3-pole), supports 6-pole at most
	Breaker Brand	Schneider, Carling
Interface		RS-485 port x 1, USB port x 1, Mini slot x 1
Safety Standard		CE
Environment	Operating Temperature	0~40°C
	Relative Humidity	0~90% (non-condensing)
	Protection (IP Degree)	IP20
Physical	Dimensions (W x D x H)	440 x 811 x 176.4 mm
	Weight	18 kg (Chassis) 1.5 kg (Each breaker module - optional)

All specifications are subject to change without prior notice.

Member of  
**Dow Jones**  
Sustainability Indices  
Powered by the S&P Global CSA

2011 – 2020  
DJSI - World Index  
2018-2020 Industry Leader



2020  
Climate Change  
Leadership Level



2020  
Water Security  
Leadership Level

**Sustainability Award**  
Gold Class 2021

**S&P Global**

2021  
Sustainability Award  
Gold Class

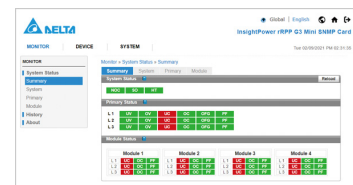




Rear panel (with cover)



Rear panel (without cover)



Remote power monitoring system (optional)

