

The power behind competitiveness

Delta InfraSuite Rack & Accessories

Modular Rack

Modular design for optimizing space utilization

The modular rack is an essential gear for data centers. Delta has developed a modular rack that increases space utilization and heat dissipation via 70% perforation rate to meet high density IT room requirements.

Convenience

- Tool-less installing, removing, and reversing front and rear doors
- Removable power trough on the roof neatly managing power, network and optic cables
- Tool-less removable roof cable ports for easier cable access and management
- Removable bottom cover allowing cable access through raised floor
- Casters for convenient moving
- Front and rear U-position numbers for easy installation
- Easy to join racks in a row for a clean and secure data room
- Front and rear doors open up to 130° for convenient installation and repair
- Full range of accessories supporting a well-managed and organized data room

Flexibility

- Split rear doors reducing space required for hot aisles and simplifying maintenance
- Adjustable mounting rails with numbered guides helping adjust depth for different installation needs
- Four multipurpose mounting bays for installing 0U rPDU or vertical cable trough
- Fully meets industry-standard EIA-310 rack requirements

Safety

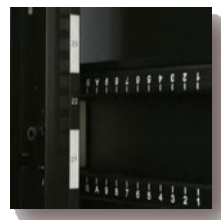
- Supporting up to 1420kg static weight
- IP20 environment protection rating
- Adjustable leveling feet for stability and security
- Front and rear doors are grounded to the rack
- Front and rear doors with locks



Roof Cable Ports & Covers



Roof Cable Trough



Vertical Position Marks



4 Universal Mounting Brackets



Delta InfraSuite Rack & Accessories

Modular Rack (19")

Physical

Item	Model	W (mm)	H (mm)	D (mm)	Packing Dimensions W x D x H (mm)	Net Weight (kg)
1	SR3110	800	2000	1100	830*1160*2156	150
2	SR1110	600	2000	1100	630*1160*2156	137
3	SR3160	800	2000	1200	830*1260*2156	131
4	SR1160	600	2000	1200	630*1260*2156	143

Conformance

Protection Rating	IP20
Rack Standards	EIA-310-D
Safe Grounding	UL 60950 (max. 63A)
Environmental	RoHS

Environment

Temperature	Operating: 0 ~ 40°C Storage: -15 ~ 50°C
Relative Humidity	Operating: 0 ~ 95%
Elevation	Operating: 0 ~ 3000m

Accessory List

Model	Description	SR1110 / SR1160	SR3110 / SR3160
SR7001	1U HORIZONTAL CABLE MANAGEMENT	•	•
SR7002	VERTICAL CABLE MANAGEMENT CHANNEL	•	•
SR7003	CABLE LADDER,300 mm	•	•
SR7004	RING TYPE WIRE HOLDER (10 pcs/per box)	•	•
SR8001	POWER CABLE TROUGH WITH THROUGH-HOLE,800 mm		•
SR8002	CABLE TROUGH WITH TROUGH-HOLE,800 mm		•
SR8003	BOTTOM COVER FOR W800*D1100 RACK CABINET		• only for 3110
SR9001	POWER CABLE TROUGH WITH THROUGH-HOLE,600 mm	•	
SR9002	CABLE TROUGH WITH TROUGH-HOLE,600 mm	•	
SR9003	BOTTOM COVER FOR W600*D1100 RACK CABINET	• only for 1110	
SR9004	1U FIXED SHELF	•	•
SR9005	1U SLIDING SHELF	•	•
SR9006	1U BLANKING PANEL (10 pcs/per box)	•	•
SR9007	2U BLANKING PANEL (10 pcs/per box)	•	•

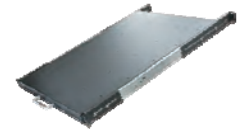
These specifications are subject to change without notice. Please contact us or our distributors in your region for the latest specs.



Power Cable Trough with Through-hole



Bottom Cover



1U Sliding Shelf



1U Horizontal Cable Management Channel



Cable Ladder



1U Blanking Panel



2U Blanking Panel